



Propel unit care and maintenance



Tools Needed:





- 2.5 mm Allen wrench
- 8mm Allen wrench or 14mm socket wrench (model specific)
- 15mm Open End Wrench
- Lubrication Kit AKIT001
Purchase from dealer
- 3" Spanner wrench with 1/4" pins
- 2" Spanner wrench with 3/16" pins

WWW.NATIVEWATERCRAFT.COM

The Propel Drive Unit was designed to be a durable low maintenance drive system for use in the Native Watercraft Multi-Sport Series kayaks. As with any item used in a water environment there are some simple steps that can be taken to insure many years of reliable service from your Propel Drive Unit. Below you will find everyday care and usage tips. In the following pages you will find step by step instructions for keeping your Propel Drive Unit working properly.

PROPEL CARE AND USAGE TIPS

- Spray off motor with a water hose after each use, especially after use in saltwater. Do not use a high pressure car wash type sprayer.
- Do not allow grasses or any other foreign matter to accumulate between propeller and cartridge.
- If your unit runs a ground, lift the unit and move the boat into deeper water before lowering the unit back down. **DO NOT TRY AND PEDAL THE BOAT OFF OF ANY OBJECT. THIS MAY RESULT IN PROP FAILURE.**
- Do not trailer or car top the boat with the unit in place. Place the unit inside the vehicle.
- Do not store the boat with the unit in place. Remove the unit and store it indoors.

	<p>Items included in lubrication kit: Item can be ordered from your Native dealer P/N: AKIT001</p> <p>Grease gun with extended tip</p> <p>3.5oz. Tube of Finish Line Teflon grease</p> <p>3/16" Allen wrench</p> <p>DO NOT ATTEMPT TO USE ANOTHER TYPE OF GREASE. THIS WILL VOID THE WARRANTY!</p>
	<p>Additional tools needed for periodic maintenance:</p> <p>3" spanner wrench with 1/4" pins</p> <p>2" spanner wrench with 3/16" pins</p>
 <p>8MM ALLEN WRENCH</p> <p>14MM SOCKET WRENCH</p>	<p>15 mm open end wrench</p> <p>2.5mm Allen wrench</p> <p>8mm Allen wrench or 14mm socket and ratchet. Model year specific.</p>
 <p>2.5MM ALLEN WRENCH</p> <p>15MM OPEN END WRENCH</p>	



4. using a 3" spanner wrench with 1/4" pins, make sure the side covers are tight to the propel housing.



5. Using a 2.5mm Allen wrench, remove the prop screw. Then pull the prop off of the shaft



6. Using a 2" spanner wrench with 3/16" pins make sure the lower cartridge is tight to the unit.



7. Using a 2.5mm Allen wrench, install the prop and prop screw until snug. Do not over tighten or distort the prop.



8. Determine if your crank bolts are a 8mm Allen head or a 14mm hex head. If there is a black plastic cap covering the hole, remove it by prying it out with a small screwdriver. Use the appropriate wrench to make sure the crank arm bolts are tight.



9. Using a 15mm open end wrench make sure the pedals are tight to the crank arms.

NOTE: FACE THE UNIT AS IF YOU ARE IN THE PEDAL POSITION. THE RIGHT PEDAL IS RIGHT HAND THREAD (CLOCKWISE TO TIGHTEN). THE LEFT PEDAL IS LEFT HAND THREAD (COUNTER CLOCKWISE TO TIGHTEN).



1. Using a 3/16" Allen wrench remove the grease port screw from the side cover.



2. Insert the pump needle into the grease port. Pump the grease into the unit. 3-4 pumps should be plenty.

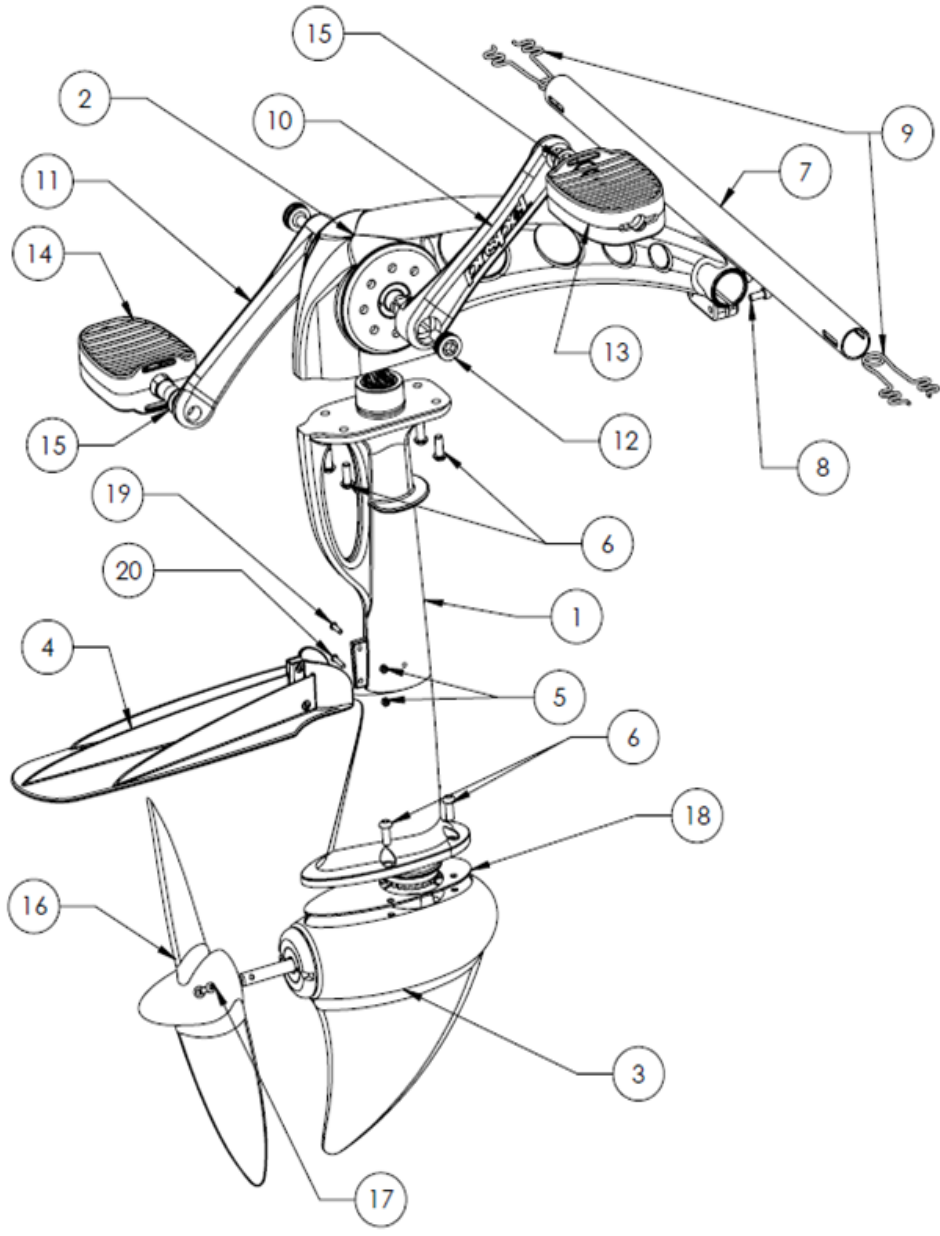
USE ONLY FINISH LINE TEFLON GREASE FOR PROPEL LUBRICATION!

LUBRICATION KIT CAN BE PURCHASED FROM YOUR NATIVE DEALER. P/N: AKIT001



3. Reinstall the grease port screw until snug. Do not over tighten.

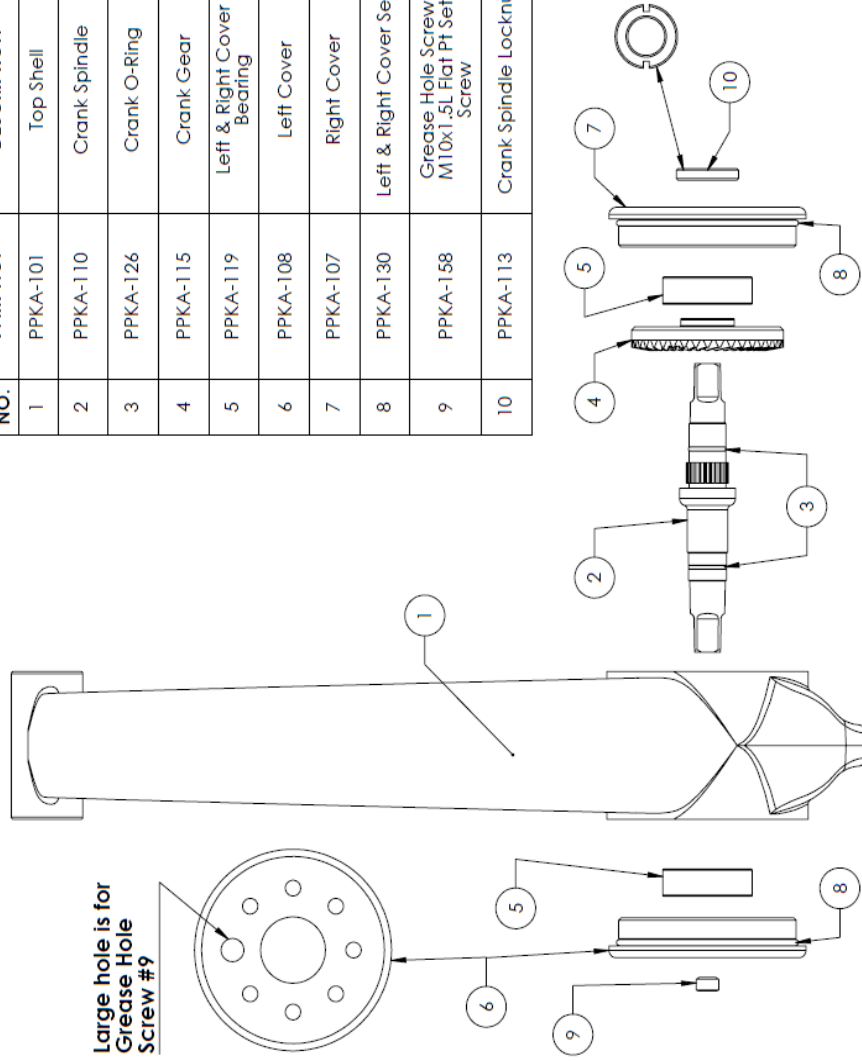
Exploded part Diagram for Propel unit



ITEM NO.	PART NO.	DESCRIPTION	QTY.
1	PPKA-170	Fairing_Center Assembly	1
2	PPKA-171	Top Shell Assembly	1
3	PPKA-172	Lower Shell Assembly	1
4	PPED-009	Cavitation Plate	1
5	PPKA-159	Locknut_Cavitation plate	2
6	PPKA-133	Lower & Upper Shell Screw	8
7	PPLA-120	Thwart Tube 20in	1
8	PPKA-138	Thwart Brace Screw	2
9	PSPR-002	Thwart Spring "New"	2
10	PPED-015	Crank Arm Propel Right	1
11	PPED-014	Crank Arm, Propel Left	1
12	PPKA-151	Crank Screw M8x20	2
13	PPED-013	Pedal, Propel Right	1
14	PPED-012	Pedal, Propel Left	1
15	PPED-016	Washer, Propel Pedal/Crank	2
16	PPED-008	Propeller	1
17	PPKA-139	Propeller Screw M4x16	1
18	PPKA-156	Gasket_Lower Shell	1
19	PPKA-136	Cavitation Plate Screw Short	1
20	PPKA-137	Cavitation Plate Screw Long	1

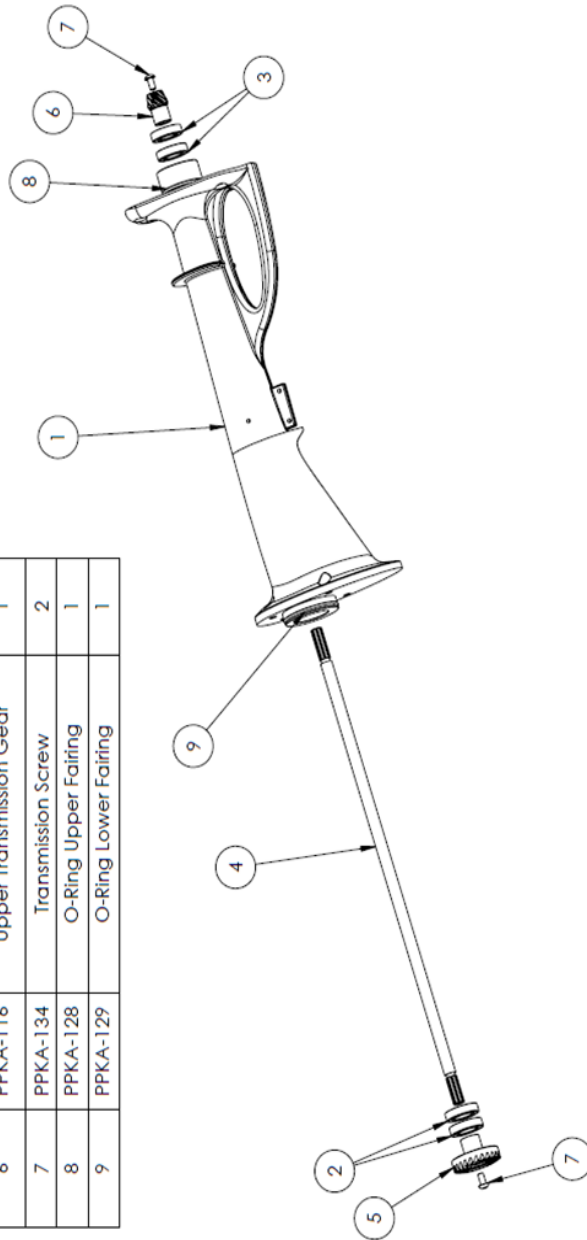
Detail part diagram for top shell

ITEM NO.	PART NO.	DESCRIPTION	QTY.
1	PPKA-101	Top Shell	1
2	PPKA-110	Crank Spindle	1
3	PPKA-126	Crank O-Ring	2
4	PPKA-115	Crank Gear	1
5	PPKA-119	Left & Right Cover Bearing	2
6	PPKA-108	Left Cover	1
7	PPKA-107	Right Cover	1
8	PPKA-130	Left & Right Cover Seal	2
9	PPKA-158	Grease Hole Screw M10x1.5L Flat Pt Set Screw	1
10	PPKA-113	Crank Spindle Locknut	1



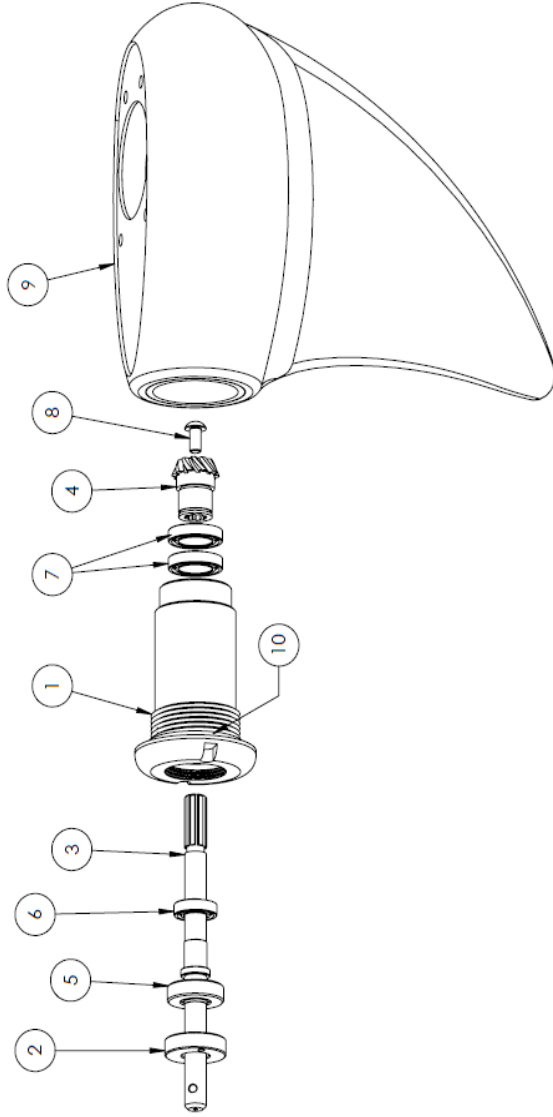
Detail part diagram for fairing

ITEM NO.	PART NO.	DESCRIPTION	QTY.
1	PKKA-102	Fairing (Center) 18 in. Long	1
1		Fairing (Center) 20 1/2 in. Long	
2	PKKA-121	Lower Transmission Bearing	2
3	PKKA-120	Upper Transmission Bearing	2
4	PKKA-111	Transmission Axle 18 in. Long	1
4		Transmission Axle 20 1/2 in. Long	
5	PKKA-117	Lower Transmission Gear	1
6	PKKA-116	Upper Transmission Gear	1
7	PKKA-134	Transmission Screw	2
8	PKKA-128	O-Ring Upper Fairing	1
9	PKKA-129	O-Ring Lower Fairing	1



Detail part diagram for Cartridge

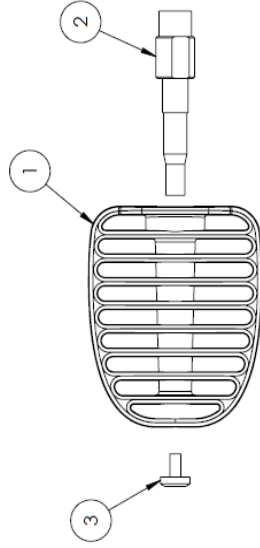
ITEM NO.	PART NO.	DESCRIPTION	QTY.
1	PPKA-109	Lower Cartridge	1
2	PPKA-114	Spindle Seal Locknut	1
3	PPKA-112	Propeller Spindle	1
4	PPKA-118	Propeller Gear	1
5	PPKA-124	Cartridge Seal	1
6	PPKA-122	Propeller Bearing Small	1
7	PPKA-123	Propeller Bearing Large	2
8	PPKA-137	Transmission Screw	1
9	PPKA-103	Lower Shell	1
10	PPKA-127	Cartridge O-Ring	1



Detail part diagram for foot pedals

PPED-012 Pedal, Propel Left

ITEM NO.	PART NO.	DESCRIPTION	QTY.
1	PPKA-145	Pedal Body	1
2	PPKA-147	Pedal Axle Left	1
3	PPKA-149	Pedal Axle End Left LHT	1



PPED-013 Pedal, Propel Right

ITEM NO.	PART NO.	DESCRIPTION	QTY.
4	PPKA-145	Pedal Body	1
5	PPKA-146	Pedal Axle Right	1
6	PPKA-148	Pedal Axle End Right	1

